



MAPLE RIDGE
PITT MEADOWS
KATZIE ● ● ●

local immigration
PARTNERSHIP



FOR MAPLE RIDGE, PITT MEADOWS AND
KATZIE COMMUNITIES

NEWCOMERS RESOURCE GUIDE

WWW.RIDGEMEADOWSKATZIELIP.CA



LOCAL IMMIGRATION PARTNERSHIP (LIPS)



Territory Acknowledgement

We recognize the unceded and traditional territories of the Katzie and Kwantlen First Nations. We respectfully acknowledge the many nations who are represented by the urban Indigenous population in the Ridge Meadows Community.



Our Mission

The Maple Ridge, Pitt Meadows and Katzie Local Immigration Partnership (LIPs) promotes the improvement of social and economic outcomes for newcomers to this community. LIPs is made up of a working committee of settlement services organizations; employers; educators; community stakeholders and newcomers.

EMAIL: C.ECHEVERRI@FAMILYED.CA

Funded by:

Financé par :



Immigration, Refugees and Citizenship Canada

Immigration, Réfugiés et Citoyenneté Canada





Who are we?

The Maple Ridge, Pitt Meadows and Katzie Local Immigration Partnership Council primary purpose is to provide guidance and support using their expertise, skills and networks to aid in the development and implementation of the planned activities set out by IRCC.

We are now entering our fourth phase in the LIPs funding that will take place from 2019 to 2025, and involves establishing a local settlement strategy by identifying key priorities for the community.

This guide is a result of the first key priority that we have undertaken. And since it was well received by our community we are pleased to published again. We hope that it is helpful to you. If you have any questions please contact us below and we will offer support.

**Thank you
Local Immigration Partnership Council**





**MAPLE RIDGE
PITT MEADOWS
KATZIE** ● ● ●

**local immigration
PARTNERSHIP**

The Local Immigration Partnership, or LIPs, is a group of service providers that works together to help newcomers settle into their new communities.

Newcomers Resource Guide

Table of Contents

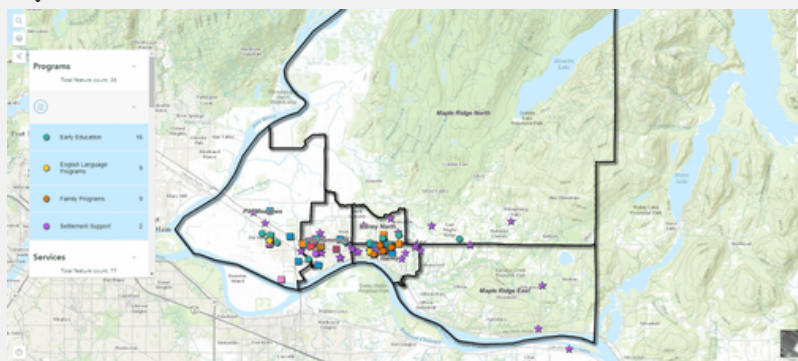
Our Communities	-1-
Immigrant and Newcomer Resources	-2-
Schools, Literacy, and ESL Programs	-3-
Banking and Mail Services	-4-
Medical and Health Services Contact Information	-5-
Prenatal and Postnatal Support, Newcomer Parent Groups	-6-
Housing, Garbage, and recycling	-7-
Grocery Shopping and Services	-8-
Household and Clothes Shopping	-9-
Government and Legal Services	-10-
Municipal Services and Programs	-11-
Public Transportation, Driving, and Licensing	-12-

This booklet is for immigrants and refugees moving into the Maple Ridge, Pitt Meadows, and Katzie. It includes information on resources, programs, and services that they will need in order to settle into their communities.



Our Communities

Maple Ridge and Pitt Meadows are two Metro Vancouver cities that are still growing in terms of immigrants that are settling here. Katzie First Nation, “qíćǎý – ...land of the moss”, is a First Nations reserve located along the Fraser River in the southern region of Pitt Meadows. The territory of the Katzie Nation includes Maple Ridge and Pitt Meadows, as well as Delta, Surrey, Coquitlam, Langley, and White Rock. The territory also includes portions of Pinecone Burke, Golden Ears, and Garibaldi Provincial Parks. At the centre of the territory is sǎ́éyćǎyaʔǭ ḱacaʔ (the lake of the Katzie), now known as Pitt Lake..



The languages most spoken by immigrants that live in Maple Ridge and Pitt Meadows are:

Mandarin . Punjabi . German . Tagalog . Spanish . Persian . Korean . Russian

90,990 Population of Maple Ridge
19,146 Population of Pitt Meadows
22.5% Immigrants in Maple Ridge
24.4% Immigrants in Pitt Meadows

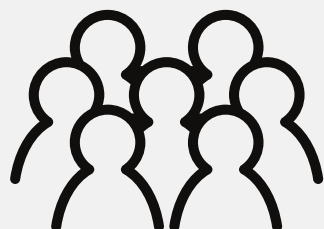
Statistics Canada, 2021 Census of Population

Maple Ridge - % of Recent Immigrants by Top Five Source Areas 2016 - 2021

Philippines	16%
India	14%
China	8%
U.S	7%
Iran	6%

Pitt Meadows - % of Recent Immigrants by Top Five Source Areas 2011 - 2016

Philippines	29%
Americas (General)	13%
Iran	13%
United Arab Emirates	8%
Mexico, China, S. Korea	7%



Immigrant and Newcomer Resources

I am new to Canada, where do I start?

There are many places and websites you can visit that will help you get your new life started in Maple Ridge or Pitt Meadows.

Settlement Services

Immigrant Services Society of BC (ISSofBC)

110 - 22638 119 Ave Maple Ridge

Call: 778-372-6567

Email: linc.mr@issbc.org

Online: issbc.org

Employment Services

WorkBC

22470 Dewdney Trunk Rd #170

Maple Ridge

Call: 604-466-4600

Online: <https://workbccentre-mapleridge.ca/>

International Credential Evaluation (ICES)

Evaluates career credentials.

3700 Willingdon Avenue Burnaby, BC

Email: icesinfo@bcit.ca

Online: <https://www.bcit.ca/ices/>

Online resources

Welcome BC

Online: <https://www.welcomebc.ca/>

New to BC

Online: <https://newtobc.ca/>

Mosaic BC

<https://mosaicbc.org/>

Ridge Meadows Seniors Centre

Maple Ridge Seniors Activity Centre and Senior outreach support

12150 224 St, Maple Ridge, BC

Call: 604-467-4993

Online: <https://rmssseniors.org/>

Pitt Meadows Seniors Activity Centre

19065 190B Avenue Pitt Meadows

Call: 604-457-4771

Online: <https://rmssseniors.org/>

Greg Moore Youth Centre

Offers varying youth groups and programs.

11925 Haney Pl, Maple Ridge

Call: 604-467-7354

Child Care Resource and Referrals

Information and support with finding child care and filling out child care subsidy forms. Offers translation services.

22768 119th Avenue Maple Ridge

Call: 604-467-2273

Email: crrp@comservice.bc.ca

Community Supports and Resources

Maple Ridge Pitt Meadows Community Services

Information and support with legal questions, seniors, children and families.

22768 119th Avenue Maple Ridge

Call: 604-467-0544

Online: <https://www.comservice.bc.ca/>

The Family Education and Support Centre

Multicultural Service Centre provides multicultural awareness and education programs to the community through a variety of different programs.

22554 Lougheed Hwy., Maple Ridge

Call: 604 467 6055

Email: c.echeverri@familyed.ca

Ridge Meadows Multicultural Society

A diverse group of local residents who desire to promote the rich cultural diversity of BC

<https://www.rmmcsociety.ca/>



Schools

How do I enroll my children in school? Through School District 42 and with the help of settlement workers in schools, you can easily enroll your child in elementary or high school. Call the number below to be connected with the settlement workers in schools.

School District 42

22225 Brown Ave, Maple Ridge

Call: 604-463-4200

Online: <https://www.sd42.ca/>



Settlement Workers in Schools (SWIS)

The primary focus of the school-based settlement service is to assist parents and their children with first-year settlement needs. The emphasis is on the facilitation of settlement and integration of newcomer families through referrals and cross-cultural education.

Literacy and ESL Programs

Where can I go to learn English and practice my skills, that are free?

Libraries offer many programs and services and resources for newcomers

Maple Ridge Public Library

22470 Dewdney Trunk Rd, Maple Ridge

Call: 604-467-7417

Online: <https://www.fvrl.bc.ca/>

Pitt Meadows Public Library

200 12099 Harris Road Pitt Meadows

Call: 604-465-4113

Online: <https://www.fvrl.bc.ca/>

LINC – ISSofBC

110 - 22638 119 Ave Maple Ridge

Call: 778-372-6567

Email: linc.mr@issbc.org

Multicultural Women's Group

A safe place for women to practice English and receive support, information, and referrals.

The Family Education and Support Centre

Online: <https://www.familyed.bc.ca/>

22554 Lougheed Hwy., Maple Ridge

Call: 604 467 6055

StrongStart

Online: www.sd42.ca/early-learning/



Banking and Mail Services

How will I find the right bank?

Lots of local banks have many opportunities for newcomers to Canada to open an account with them. Vancity offers loans for credential upgrading and equipment for trades work.

All the financial service providers below offer some form of translation services at their branch or call centres.

BMO Bank of Montreal
22410 Lougheed Hwy Maple Ridge
Call: 604-463-2444

OR
12 - 20691 Lougheed Hwy Maple Ridge
Call: 604-465-5491

OR
22410 LOUGHEED HWY MAPLE RIDGE
Call: 604-463-2444
Online: www.bmo.com

CIBC
11909 - 224 Street Maple Ridge
Call: 604-466-2500
Online: www.cibc.com

RBC Royal Bank
11855 224th St, MAPLE RIDGE
Call: 604-463-6271

OR
20320 Lougheed Highway, MAPLE RIDGE
Call: 604-467-3822
Online: <https://www.rbcroyalbank.com/>

TD Canada Trust
22709 LOUGHEED HWY UNIT 560,
MAPLE RIDGE
Call: 604-466-6800

OR
20398 DEWDNEY TRUNK RD U 200,
MAPLE RIDGE
Call: 604-460-2925
Online: <https://www.td.com/ca/en/personal-banking>

Vancity
22824 Lougheed Hwy Maple Ridge
Call: 604 877-7000
OR
750-19800 Lougheed Highway, Pitt Meadows
Call: 604-877-7000
Online: <https://www.vancity.com/>

Scotia Bank
22529 Lougheed Hwy. #100, Maple Ridge
Call: 604-466-3575
Online: <https://www.scotiabank.com/ca/en/personal.html>

Envision Financial
20133 Lougheed Hwy., Maple Ridge
Call: +1 888-597-6083
Online: <https://www.envisionfinancial.ca/home>

How Do I send and receive mail?

Canada Post
Offers mail delivery to your door or neighborhood box and you can send mail at the Post office or at any red Canada Post mailbox.

20800 Lougheed Hwy., Maple Ridge
Call: + 18666076301
More Locations: https://www.canadapost-postescanada.ca/information/app/fpo/personal/finpostoffice?icid=display_c_int_hero_1771



Medical and Health Services Contact Information

How do I find a family Doctor?

Go to www.divisionsbc.ca/rm/findadoctor for doctors accepting new patients.

Walk-in-clinics

You do not need an appointment to see a doctor

Cottonwood Medical Clinic Inc.
12005 238b St, Maple Ridge
Call: 604-476-9705

Mageta Family Medical Clinic
20528 Lougheed Hwy., Maple Ridge
Call: 604-465-1100

New Pitt Meadows Walk-in-clinic
12181 Harris Road, Pitt Meadows
Call: 604-465-4911
Online:
<https://newpittmeadowsmedicalclinic.ca/>

Ridge Meadows Care Clinic at Real Canadian Superstore
19800 Lougheed Hwy Suite 201, Pitt Meadows
Call: 604-460-4319

HealthLink BC

8-1-1 is a free provincial health information number to connect you directly with a registered nurse, a registered dietitian, a qualified exercise professional, or pharmacist and provides translation services in more than 130 languages.

Call: 8-1-1

Online: www.healthlinkbc.ca

Dental Services

Pitt Meadows Dental Centre
19618 Hammond Rd, Maple Ridge
Call: 604-465-7733

Maple Place Dental Centre
Unit 106 – 22971 Dewdney Trunk Road,
Maple Ridge
Call: 604-466-2933

Maple Ridge Mental Health

Provides free services to adults in Maple Ridge and Pitt Meadows with mental health and/or substance use issues.
500-22470 Dewdney Trunk Road. Maple Ridge
Call: 604-476-7165

Mental Health Crisis Line
Call: 310-6789

Maple Ridge Public Health

Offers immunizations, pregnancy and early motherhood care, early childhood development, speech therapy, hearing clinics, nutrition, dental care, youth clinics, harm reduction and more.
400 - 22470 Dewdney Trunk Rd, Maple Ridge
Call: 604-476-7000

Ridge Meadows Hospital

11666 Laity St, Maple Ridge
Call: 604-463-4111
Emergency: 9-1-1

Interpreters are available at the above health facilities. Please request an interpreter at least 48 hours ahead of your appointment.

BC Biomedical Labs

#101-11743 224th St Maple Ridge
Call: 1-800-431-7206
OR
#102-12195 Harris Road
Pitt Meadows, BC
Call: 1-800-431-7206



Prenatal and Postnatal Support

Where can I find a care provider during my pregnancy?

Several health practitioners are trained to provide medical care and support for prenatal, labour, delivery and postpartum care. For BC residents, your Medical Service Plan (MSP) covers the cost of a main maternity care provider that includes a family doctor, registered midwife or an obstetrician.

Fraser Health Public Health

Offers a range of free programs and supports for pregnant and new mothers including information materials, breast feeding support and community resources.

400-22470 Dewdney Trunk Road. Maple Ridge

Call: 604-476-7000

Ridge Meadows Maternity Clinic

Prenatal care through doctor referral or safe referral

20580 Lougheed Hwy, Maple Ridge

Call: 604-460-4444

Transition Midwifery Practice

11770 Fraser St #100, Maple Ridge

Call: 604-466-5541

Marigold Midwifery Care

308-12099 Harris Rd, Pitt Meadows

Call: 604-459-4499



Newcomer Parent Groups

What kind of groups can I join with my family?

The Family Education and Support Centre and Immigrant Settlement Services of BC offers new parent and pre-school aged programs for socializing with other English and non-English speaking families and children.

Family Education and Support Centre

22554 Lougheed Hwy., Maple Ridge

Call: 604-467-6055

Online: <https://www.familyed.bc.ca/>

Immigrant Service Society of BC (ISSofBC)

110 - 22638 119 Ave Maple Ridge

Call: 778-372-6567

Online: <https://issbc.org/>



Housing

How do I find safe, inexpensive housing or get help with my rent?

BC Housing can help with rent assistance and low income housing if you are homeless or if you are a women in an abusive relationship.

Suite 1701-4555 Kingsway, Burnaby
Call: 604-433-1711
Online: <https://www.bchousing.org/housing-assistance>

Rental Assistance Program (RAP)

Provide eligible low income working families with cash assistance to help with their monthly rent payments.

Subsidized Housing

If you live in BC, have low income and meet other criteria you can apply for subsidized housing.

Homeless Services

BC housing online provides links to services available to you if you do not have housing.

Women Fleeing Violence

BC housing online provides links to services available to you if you are a woman experiencing violence in your relationship.

Locally, Cythera Transition House Society provides a safe refuge and basic necessities for up to 30 days to women and children fleeing abuse. Staffed 24 hours a day, residents receive emotional support in a secure, nonjudgmental, and confidential environment. If you are in crisis or need support call their house at 604 467 9966-operated 24 hours a day.



Garbage & Recycling

Who will take my garbage away?

Households creates 3 types of waste. Garbage, compostables (food waste) and recyclables. If you live in an apartment you can dispose of them in the containers provided. If you rent a home you will need to hire a waste management company to come pick them up. Recycling and composting will save you money on garbage pickup fees.

To find out more about what is garbage, compost and recyclables call or log to the website listed in this section.



Garbage and Organic waste Collection and disposal

Online:<https://www.mapleridge.ca/356/Garbage-Recycling-Composting>

To find how to have your garbage and organic waste collected weekly

Ridge Meadows Recycling
Call for bins and bags and pickup schedule. More items can be taken to their facility.

10092 236 St Unit 1, Maple Ridge
Call: 604-463-5545

Online: <https://www.rmrecycling.org>
Email: info@rmrecycling.org



Grocery Shopping and Services

Where can I buy groceries and foods from home?

Grocery Stores

(All major grocery stores listed below sell Halal, vegan, organic and ethnic foods)

No Frills

22427 Dewdney Trunk Rd, Maple Ridge

Safeway

300, 20201 Lougheed Hwy, Maple Ridge

Save-on-Foods (4 Locations)

22703 Lougheed Highway, Maple Ridge

23981 Dewdney Trunk Road, Maple Ridge

20395 Lougheed Highway Unit 300, Maple Ridge

19150 Lougheed Highway, Pitt Meadows

The Real Canadian Superstore

19800 Lougheed Hwy. Suite 201 Suite 201, Pitt Meadows

Walmart

11850 224 St, Maple Ridge

FreshCo 202 St & Dewdney Trunk

20201 Lougheed Hwy. #300 · (604) 460-1553

Meridian Farm Market

11980 227 St, Maple Ridge

Fifth Avenue Grocery

12048 216 St, Maple Ridge

Country Milk

22207 Dewdney Trunk Rd, Maple Ridge



Markets

Bruce's Country Market

23963 Lougheed Hwy., Maple Ridge

Hopcott Farms

18385 Old Dewdney Trunk Rd, Pitt Meadows

Kin's Farm Market

20330 195 88 Ave #195, Langley Twp

Langley Farm Market (3Locations)

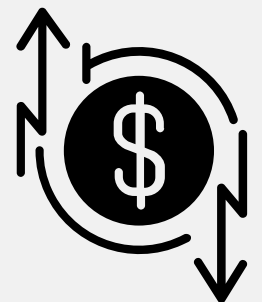
11935 207 St, Maple Ridge

22621 Lougheed Hwy #1, Maple Ridge

12438 Harris Rd, Pitt Meadows

Maple Market

11931 227 St, Maple Ridge



Grocery Shopping and Services

Where can I buy groceries and foods from home?

International Specialty Stores

Lupita Mexican Foods
22349 Selkirk Ave, Maple Ridge

Sabinas Deli
22326 McIntosh Ave, Maple Ridge

Bigboy's Chigs To Go

Other Speciality Stores and Markets

Golden Ears CheeseCrafters
22270 128 Ave, Maple Ridge

Haney Farmers Market
22407 Dewdney Trunk Rd, Maple Ridge
Online: <https://www.farmersandmore.org/>

Karen's Koop
28203 Lougheed Hwy Maple Ridge, BC

Hopcott Farms
18385 Old Dewdney Trunk Rd, Pitt Meadows

It's About Wine-Winexpert
2 - 20306 Dewdney Trunk Road Maple Ridge

Triple Tree Nurseryland Ltd.
20503 Lougheed Hwy., Maple Ridge

Roots Natural Organic Health Foods
Vegan, dairy/wheat/gluten free food, raw food,
low sodium and sugar free food.
22254 Dewdney Trunk Rd, Maple Ridge

What if I need help to have food?

Friends in Need Food Bank
Maple Ridge Location
22726 Dewdney Trunk Rd, Maple Ridge

Pitt Meadows Location
12240 Harris Rd, Pitt Meadows
Online: <https://friendsneedfood.com/>



Household and Clothes Shopping

Where can I shop and find a variety of stores?

Maple Ridge and Pitt Meadows has many malls where a variety of stores are located.

Malls

Haney Place Mall
11900 Haney Pl, Maple Ridge
Call: 604-467-1554

Maple Ridge Square
22441 Dewdney Trunk Rd, Maple Ridge

Meadowtown Shopping Centre
19800 Lougheed Hwy., Pitt Meadows
Call: 604-688-8783

Meadow Vale Shopping Centre
19150 Lougheed Hwy, Pitt Meadows

Valley Fair Mall
22709 Lougheed Hwy., Maple Ridge
Call: 604-467-1920

Westgate Shopping Centre
Lougheed Hwy &, 203 St, Maple Ridge



Where can I find more affordable clothing and household items?

One of the many local thrift stores, which are stores that offer low cost items for sale, are a great place to find more affordable everyday items.

Ridge meadows Hospice Thrift Store
12011 224 St, Maple Ridge

Value Village
11998 207 St Unit #4, Maple Ridge
Call: 604-463-6053

Dollar Stores
Dollar Tree
11932-207th St. Maple Ridge
37-11900 Haney Place, Maple Ridge

Dollar Store Plus Store
19198 Lougheed Hwy, Pitt Meadows

Dollarama
20398 Dewdney Trunk Rd Maple Ridge
22565 Lougheed Hwy Maple Ridge



Government and Legal Services

Service Canada

22325 Lougheed Hwy., Maple Ridge

Call: +1 800-622-6232

Online: <https://www.servicecanada.gc.ca/>

What can I do at Service Canada?

- Citizenship Certificate
- Citizenship Program
- Immigrations Loans Programs
- Interim Federal Health Program
- Employment and Immigration
- Post-Graduation Work Permit Program
- Reaffirmation Ceremony
- Resettlement Assistance Program
- Right of Permanent Residence Fee Loan
- Study Permits
- Temporary Resident Visa
- Permanent Resident Program
- Permanent Resident Card
- Travel Document
- Permanent Resident Abroad
- Travel Documents
- Work Permits
- Job Bank



Service BC

175-22470 Dewdney Trunk Rd #175, Maple Ridge

Call: 604-466-7470; 1 800 663-7867

Email: ServiceBC.MapleRidge@gov.bc.ca

Online: gov.bc.ca

What can I do at Service BC?

- Birth, Death and Marriage
- Certificate Applications
- Business Information and Referrals
- Drivers License Services
- Interim Federal Health Program
- Employment Standards Information
- Fish and Wildlife Licenses
- ICBC Payments
- Post-Graduation Work Permit
- Marriage Licenses
- Personal Property Registry
- Voter Registration
- OneStop Business Registration
- Residential Tenancy Information
- Property Tax Information and Collections
- Motor Vehicle Fine Payments
- BC Hydro Payments
- And many more services

Legal Aid BC Call Centre

Call: 604-408-2172 (Greater Vancouver)

1-866-577-2525 (elsewhere in BC)

Online: <https://legalaid.bc.ca/>



Municipal Services and Programs

Where can I go to find out what services the cities provide?

Maple ridge City Hall
11995 Haney Pl, Maple Ridge
Call: 604-463-5221
Online: <https://www.mapleridge.ca/>

Pitt Meadows City Hall
12007 Harris Rd, Pitt Meadows
Call: 604-465-5454
Online: <https://www.pittmeadows.ca/>

Where can I go to swim, workout or learn more about what programs are offered at Parks, Recreation and Culture?

City of Maple Ridge
11995 Haney Place Maple Ridge
Call: 604-463-5221
Online: <https://www.mapleridge.ca/151/Parks-Recreation-Culture>

City of Pitt Meadows
12007 Harris Rd Pitt Meadows
Call: 604-465.5454
Online: <https://www.pittmeadows.ca/>



Where can I take an art class, buy tickets for a play or see local art?

ACT Art Centre
11944 Haney Pl, Maple Ridge
Call: 604-476-2787
Online: <https://theactmapleridge.org/>

What is the non emergency phone number for the police?

RCMP
11990 Haney Pl, Maple Ridge
Call: 604-463-6251
Online: <https://www.rcmp-grc.gc.ca/detach/en/d/252>

Call 911 for all emergencies including police, fire and ambulance.



Public Transportation

How do I use public transit or get around if I do not drive?

Translink

Call: 604-953-3333

Online: <https://www.translink.ca/>

West Coast Express

Online: <https://www.translink.ca/about-us/about-translink/operating-companies/west-coast-express>

HandyDART

Call: 604-575.6600

Online: <https://www.translink.ca/rider-guide/transit-accessibility/handydart>



Driving & Licensing



For more information on driving and licensing go online to www.icbc.com

How do I get a drivers license if I do not have one or exchange it for a BC drivers license?

Drivers licensing, road tests and knowledge tests can be take at Service BC

ICBC

175 - 22470 Dewdney Trunk Road, Maple Ridge

Call: 604 466-7470

Online: <https://www.icbc.com/driver-licensing/visit-dl-office/Pages/Book-a-road-test.aspx>

Where can I get driving lessons?

There are many places you can go to take driving lessons. Consult your local telephone directory or Google 'driving lessons'. Below is one example.

Good Start Driving School

12261 Fletcher Street, Maple Ridge

Call: 604-375-5038



FUNDERS AND CONTRIBUTORS



**MAPLE RIDGE
PITT MEADOWS
KATZIE** ● ● ●
**local immigration
PARTNERSHIP**

Contact the Local Immigration Partnership at
222554 Lougheed Hwy, Maple Ridge, BC V2X 2V1
email: c.echeverri@familyed.ca

NOTES



**MAPLE RIDGE
PITT MEADOWS
KATZIE** ● ● ●

**local immigration
PARTNERSHIP**



www.ridgemeadowskatzielip.ca